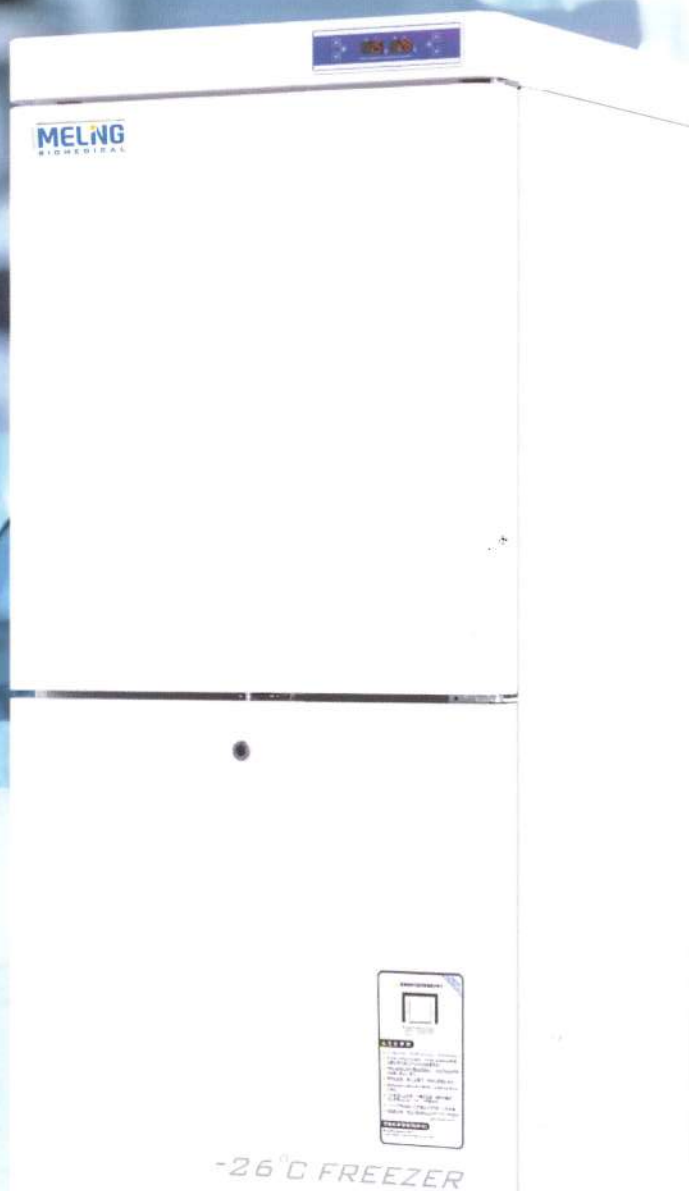


# 2~8°C / -10~-26°C Combined Refrigerator and Freezer

Brand New Appearance

Separate Control of Refrigeration & Freezing



## YCD-EL300



### Environmentally Friendly & High-efficiency

Environmentally-friendly Freon-free refrigerant and high-efficiency compressor supplied by an international famous brand ensure energy saving and high efficiency.

### Refrigeration System

Two compressors and separate control of the upper refrigeration chamber and the lower freezing chamber.

### High-precision Computerized Temperature Control

The digital temperature display can indicate operating status clearly, and users may set the high temperature/low temperature alarm points based on their needs.

### Thermal Insulation System

The CFC-free polyurethane foam technology and the thicker insulating layer can improve the effect of thermal insulation.





### Temperature Control System

- LCD digital temperature display, clear operation status, High and low temperature alarm temperature points can be set according to user requirements;
- High precision microcomputer temperature control system, 2 ~ 8 °C refrigerated, Frozen -10 ~ -26 °C adjustable;
- Display both refrigerating temperature and freezing temperature, refrigerating room, The refrigerating chamber can be closed separately.



### Refrigeration System

- Environmentally-friendly Freon-free refrigerant and high-efficiency compressor supplied by an international famous brand ensure energy saving and high efficiency.
- Two compressors and separate control of the upper refrigeration chamber and the lower freezing chamber.
- The CFC-free polyurethane foam technology and the thicker insulating layer can improve the effect of thermal insulation.



### Security System

- The well-developed audible & visual alarm system makes it safer for storage;
- The turn-on delay and stopping interval protection function can ensure reliability in running;
- The door is equipped with a lock, improving security of sample storage.



### Lighting System inside the Cabinet

The LED lighting system provides great visibility.

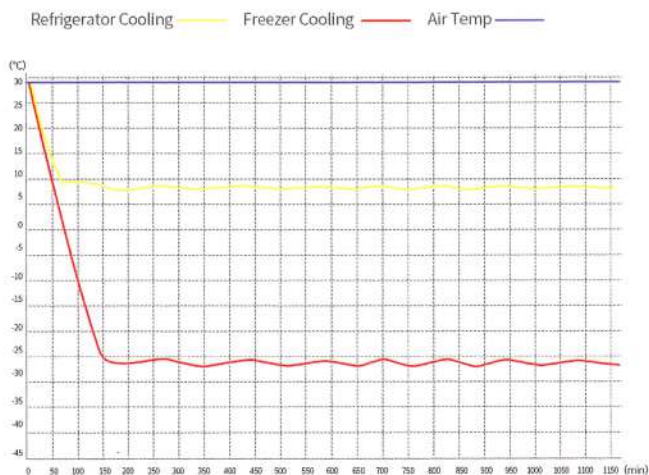
### Human-oriented

- Three steel wire shelf are standard in the refrigerator room, and three ABS drawers are standard in the freezer room;
- Casters at the bottom with locking device for easy movement.

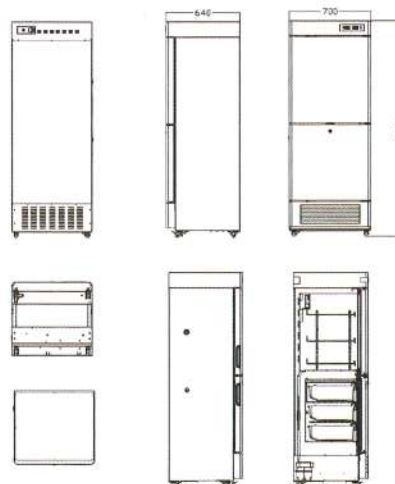
## ✓ Scope of Application

Suitable for freezing of ice bars and storage of various things needing refrigerated storage such as blood plasma, reagent, etc. Suitable for use in hospitals, clinics, health and disease prevention systems, blood banks, laboratories in colleges & universities, the frozen food industry and catering industry, etc.

## 🔗 Performance Data / Cooling Curve



## 📏 External Dimensions



## ✓ Specification Chart

2~8°C / -10~-26°C Combined Refrigerator and Freezer	
Model	YCD-EL300
Cabinet Type	Upright
Capacity(L)	300, R:197, F:103
Internal Size(W*D*H)mm	R:600*510*657, F:500*460*535
External Size(W*D*H)mm	700*640*1876
Package Size(W*D*H)mm	760*720*1935
NW/GW(Kgs)	87/106
Performance	
Temperature Range	R:2~8, F:-10~-26
Ambient Temperature	16-32
Cooling Performance	R:5, F:-26
Climate Class	N
Controller	Microprocessor
Display	Digital display
Refrigeration	
Compressor	2pcs
Cooling Method	R: Forced air cooling , F:Direct cooling
Defrost Mode	R:Automatic,F:Manual
Refrigerant	R600a
Insulation Thickness(mm)	R:50, F:100
Construction	
External Material	PCM
Inner Material	Aluminum plate with spraying
Shelves	R:3(coated steel wired shelf),F:3(ABS)
Door Lock with Key	Yes
Lighting	LED
Access Port	2pcs. Ø 25 mm
Casters	4 (2 casters with brake)
Alarm	
Temperature	High/Low temperature
System	Sensor failure,Door ajar
Electrical	
Power Supply(V/Hz)	220-240~/50
Power(W)	250
Power Consumption(KWh/24h)	1.54
Rated Current(A)	1.37

\*The model, parameters and performance specified in this brochure may be changed without prior notice because of product upgrading.

\*There may be differences between the product images shown in this brochure and the actual products. When you are buying any product, please check the actual product.