

2~8°C / -10~-26°C Medical Refrigerator & Freezer

2019 New Product Launch

Separate Control of Refrigeration & Freezing



YCD-EL450



Environmentally Friendly & High-efficiency

Environmentally-friendly Freon-free refrigerant and high-efficiency compressor supplied by an international famous brand ensure energy saving and high efficiency.



Refrigeration System

Two compressors and separate control of the upper refrigeration chamber and the lower freezing chamber.



High-precision Computerized Temperature Control

The digital temperature display can indicate operating status clearly, and users may set the high temperature/low temperature alarm points based on their needs.



Thermal Insulation System

The CFC-free polyurethane foam technology and the thicker insulating layer can improve the effect of thermal insulation.





Temperature Control System

- High-precision microcomputer temperature control system with built-in control/alarm sensors for High/low temperature, ambient temperature and evaporator temperature etc. ensuring the safe and stable running.
- 1 inch high brightness digital temperature display with 0.1°C display precision; the temperature can be set freely.



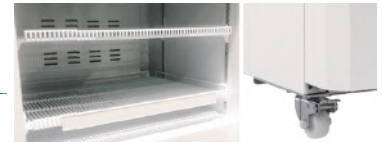
Refrigeration System

- Equipped with high-efficiency compressor and international brand fan, ensuring energy saving and silent running.
- Two compressors and separate control of the upper refrigeration chamber and the lower freezing chamber.



Security System

- Perfect audible and visual alarm system makes it safer for storage. Equipped with alarm functions including high/low temperature alarm, high ambient alarm, sensor failure alarm, door opening alarm, power failure alarm, etc.
- Buzzer alarm for the door opening more than 1 minute, alarm automatically muted when the door is closed.



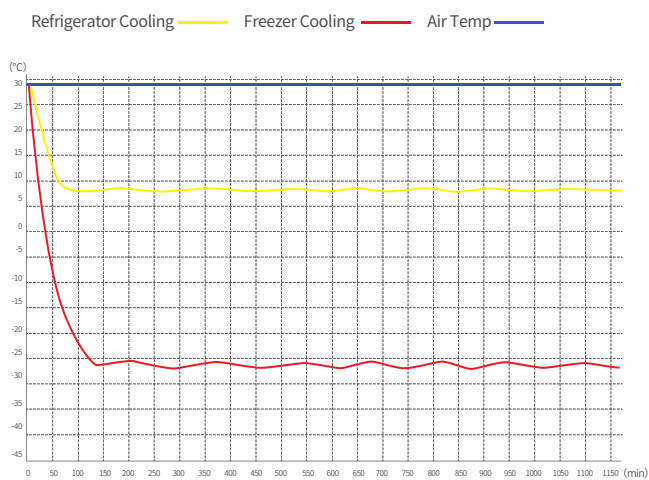
Human-oriented

- The freezing chamber interior is equipped with 6 drawers, refrigerating chamber 3 coated steel wired shelf for object storage.
- 4 castors for the front and back, 2 front castors with lock.

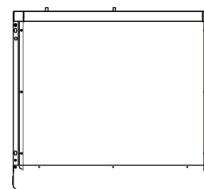
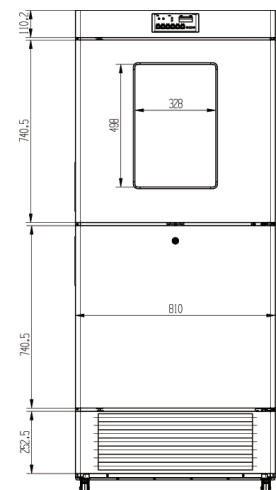
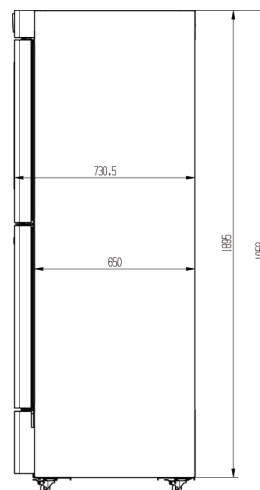
✓ Scope of Application

Suitable for use in scientific research, cryogenic test on special materials, blood plasma cryopreservation, low temperature resistance test on biological materials, vaccines, biological products and military products, etc. Suitable for use in research institutions, the electronic industry, the chemical industry, hospitals, the health, & disease prevention system, laboratories in colleges & universities, military enterprises, etc.

🔗 Performance Data / Cooling Curve



📏 External Dimensions



2~8°C /-10~-26°C Medical Refrigerator & Freezer

Model	YCD-EL450
Cabinet Type	Upright
Capacity(L)	450,R:219,F:219
Internal Size(W*D*H)mm	R:650*570*627, F:650*570*627
External Size(W*D*H)mm	810*745*1955
Package Size(W*D*H)mm	895*820*2046
NW/GW(Kgs)	144/156
Performance	
Temperature Range	R:2~8, F:-10~-26
Ambient Temperature	16-32
Cooling Performance	R:5, F:-26
Climate Class	N
Controller	Microprocessor
Display	Digital display
Refrigeration	
Compressor	2pcs
Cooling Method	R: Forced air cooling , F:Direct cooling
Defrost Mode	R:Automatic, F:Manual
Refrigerant	R600a
Insulation Thickness(mm)	R:80, F:80
Construction	
External Material	Powder coated material
Inner Material	Aluminum plate with spraying
Shelves	R:3(coated steel wired shelf),F:6(ABS)
Door Lock with Key	Yes
Lighting	LED
Access Port	2pcs. Ø 25 mm
Casters	4 (2 caster with brake)
Data Logging/Interval/Recording Time	USB/Record every 10 minute / 2 years
Door with Heater	Yes
Backup battery	Yes
Alarm	
Temperature	High/Low temperature, High ambient temperature .
Electrical	Power failure,Low battery
System	Sensor error,Door ajar,USB datalog failure
Electrical	
Power Supply(V/HZ)	220/50
Rated Power(W)	314
Input Power(W)	464
Power Consumption(KWh/24h)	3.29
Rated Current(A)	2.11
Options Accessory	
System	Printer, RS485,RS232,Remote alarm contact

*The model, parameters and performance specified in this brochure may be changed without prior notice because of product upgrading.

*There may be differences between the product images shown in this brochure and the actual products. When you are buying any product, please check the actual product.